



Profile of ENAT, the European Network for Accessible Tourism

ENAT was established in January 2006 as a project-based initiative of nine sponsoring organisations in six EU Member States. The European Commission, DG Employment and Social Affairs, gave financial support to the Network in its first two years of operations, 2006 to 2007.

ENAT was registered with the office of the Commercial Court of Brussels on 8 May 2008 as the European Network for Accessible Tourism asbl. (non-profit association).

Contact details:

European Network for Accessible Tourism – ENAT asbl.

Registered office:

Rue de la Fleur d'Oranger 37, bte 213,
B-1150 Woluwe Saint-Pierre,
Brussels, Belgium.

ENAT Secretariat, Athens, Greece.

Tel. 0030 210 6148380

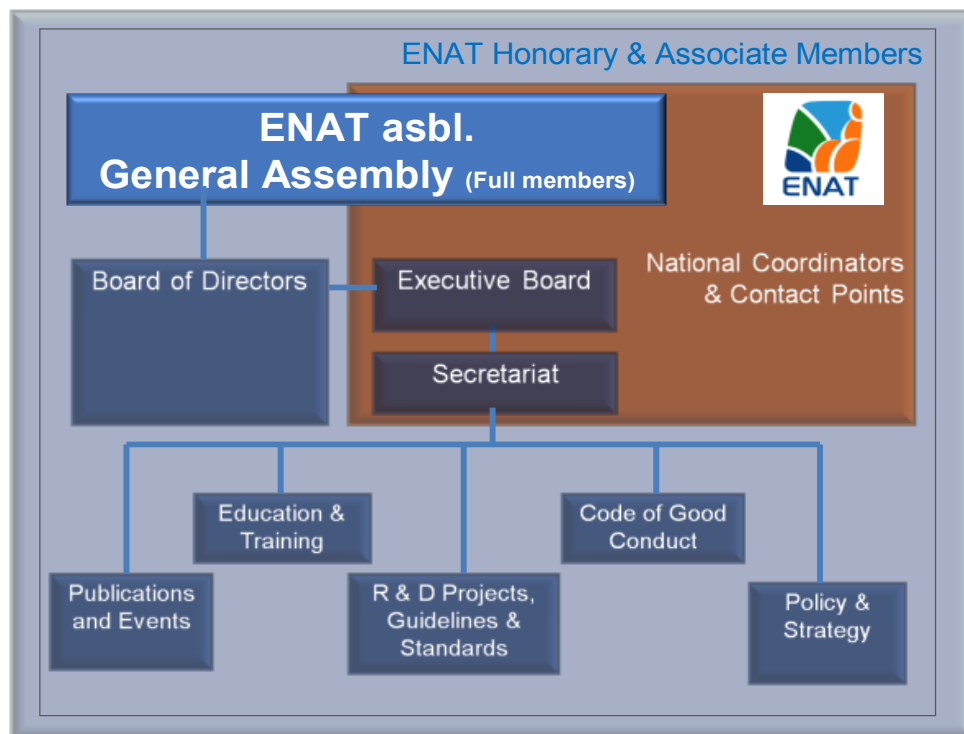
Email: enat@accessibletourism.org

ENAT is registered as Company no. 0897.614.640

ENAT is managed by an international Board of Directors, drawn from ENAT's founding partners and other leading organisations in accessible tourism.

The Annual General Assembly, made up of all paid-up full members, is the governing body of the association.

The diagram below presents the structure of the association and its main areas of work.



Mission Statement

The mission of the European Network for Accessible Tourism is to make European tourism destinations, products and services accessible to all travellers and to promote accessible tourism around the world. .

- ENAT aims to achieve this by bringing together sector actors to share their experience, learn from each other and collaborate in national and international projects and programmes.
- ENAT promotes wider awareness and understanding of the need for accessibility in all areas of travel and tourism throughout Europe.
- ENAT supports the development and spread of good policies and practices.
- ENAT works to develop knowledge and expertise on accessibility issues in the European tourism field.
- ENAT provides a platform for those who support accessibility in tourism, and a representative voice towards European and national institutions and organisations whose actions have a direct influence on the tourism sector.

Membership

Total membership of ENAT asbl is over 200 members. These include:

- Full Members,
- Honorary Associate Members
- Associate Members.

The members represent:

- 50% Tourism businesses
- 15% Public sector
- 35% NGOs

- in over 30 countries in Europe, Africa, Middle East, North and South America, Asia, Australia.

Honorary Associate Members

- Marina Diotallevi, UN World Tourism Organisation
- Dr. Scott Rains, Rollingrains.com USA
- Mr. Bill Ishmael, UK
- Imma Bonet, Design for All Foundation, Spain
- Mr. Mohammed Al-Tarawneh, UN Committee, Convention on Rights of Persons with Disabilities
- GAATES – Global Alliance on Accessible Technologies and Environments
- OITS – International Organisation for Social Tourism , Charles Bélanger
- Mr. Peter De Wilde, CEO, Tourism Flanders, Belgium.

Memoranda of Understanding

ENAT has signed MoUs with OITS, Sustainable Travel International (STI), the United Nations World Tourism Organisation (UNWTO), Design for All Foundation (DfAF), the European Association for Service Providers for People with Disabilities (EASPD) and the European Association for Responsible Tourism and Hospitality (EARTH).

Examples of current and recent ENAT projects

T-GulDE – Tourist Guides for people with Intellectual & learning Difficulties in Europe

T-GulDE is an initiative of nine organisations supported by the European Union's Lifelong Learning Programme, "Leonardo Da Vinci". Partners include FEG – the European Association of Tourist Guides' Associations, cultural institutions, SMEs involved in vocational training and NGOs working with people with intellectual disabilities. The initiative addresses two of today's major societal challenges in Europe: to increase opportunities in the job market and to increase social inclusion. The aim is to produce an EU training model and Manual for training Tourist Guides in guiding people who have learning difficulties or other intellectual impairments.

Project Duration: November 2012 to May 2015

Website: <http://www.t-guide.eu/?i=t-guide>

EU Study: Mapping and Performance Check of the Supply of Accessible Tourism Services in Europe.

This research study, under contract to the European Commission DG Enterprise and Industry, involved interviews with key stakeholders, desk research and surveys to identify "best practices" across the accessible tourism supply chains. In addition, a new "European Directory of Accessible Tourism" has been set up, (<http://pantou.org>) enabling tourism suppliers to present their accessible accommodation, venues, attractions and services.

Project Duration: February 2013 to May 2014.

A summary of the results of the project was presented at the EU stakeholder conference *Mind the accessibility gap* in June 2014 and is available for download at: http://www.accessibletourism.org/resources/toolip/doc/2014/06/09/ambrose-eu-accessible-tourism_supply-study.pdf

EU Study: Mapping the Skills and Training Needs to Improve Accessibility in Tourism Services.

This research study, under contract to the European Commission DG Enterprise and Industry, aimed to map the staff skills requirements to improve accessibility and safety in the tourism services and analyse the availability of corresponding training in EU Member States or transferable (from other regions of the world).

Project Duration: January 2013 to March 2014.

Results have been presented at the EU Conference Mind the accessibility gap in June 2014 and are available at the EU Commission and ENAT website
<http://www.accessibletourism.org/?i=enat.en.reports.1620>

Inclusion Through Accessibility (ITA) Project, Georgia.

Financed by the European Commission and project partners, the ITA project aimed to contribute to developing a new direction in the tourism sphere in Georgia. It was designed to benefit, in particular, persons with disabilities and elderly citizens and contribute to the economic development of Georgia by involving directly civil society organisations, small and medium-sized enterprises and public sector bodies in training, development and dissemination activities.

Project Manager: NGO PARSA. Tbilisi, Georgia. Partner: ENAT

Project Duration: November 2012 to October 2013.

Project brochure: http://parsa.ge/uploads/docs/parsa_eng_12dec.pdf

eAccess+ Thematic Network

eAccess+ is a thematic network funded under the EU Seventh Framework Programme, ICT PSP third call for proposals 2009:CIP-ICT-PSP-2009-3 Project Number: 250568.

The **eAccess+** network aims to bridge the widening gap between the potential of ICT/AT and eAccessibility for people with disabilities and the ageing population on the one hand and the actual implementation of eAccessibility on the other hand.

eAccess+ is driven by 25 core members, coming from all over Europe. It is their task to involve all stakeholder groups at national level and to expand the network by recruiting a group of so called "Associated Partners". ENAT has contributed to the network by adding information directed towards the tourism sector, in particular, and by making two Europe-wide studies of the accessibility of National Tourist Organisations' websites.

Lead Partner: University of Linz, Austria

Project duration: 2010 to 2013.

Project Home page: <http://www.eaccessplus.eu>

STEEP - Social Tourism European Exchanges Platform

The STEEP project aims at creating and developing a web-based platform as a mechanism intended to facilitate transnational tourism particularly during the low season, and within the different Calypso target groups. It also aims to increase the competitiveness of tourism SME's by facilitating business opportunities between intermediaries acting on behalf of clients.

Lead Partner: International Social Tourism Organisation (ISTO-OITS)

Project Duration: 1 April 2012 to 31 July 2013.

Project website: www.eCalypso.eu

ETCAATS – Access Training

ENAT was a partner in the EU Leonardo funded project, *European Training Certificate Accessibility for All in the Tourism Sector* (2009 – 2011) which produced an online Introductory Training Course on Accessible Tourism for managers and staff in the tourism and hospitality sectors.

The course is available free of charge at www.accesstraining.eu